

**The 2006-2007 Report of Degrees Awarded
by the University of Missouri**

Randy Sade
Assistant Research Analyst

Office of Institutional Research and Planning
University of Missouri System

September 2007

IR&P 2007, Report 5

<http://www.umsystem.edu/ums/departments/fa/planning/>

The 2006-2007 Report of Degrees Awarded by the University of Missouri

Executive Summary

This report includes graphs and tables of degrees awarded by each campus since 1998. The first table provides a summary of degrees by level for each campus, while the second table series gives the number of awards by the colleges of each campus. The *Department Detail Summary* reflects the number of degrees awarded by academic department. These tables also show the average number of degrees over a 3, 5, & 10-year period and the percent change in FY 2007 that is relative to the 10-year average.

The highlights of the report include:

- The University of Missouri System awarded a record 13,880 degrees, a 15% growth in FY 2007 relative to the 10-year average. (Table 1)
- Relative to the 10-year average, the number of FY 2007 bachelors degrees for the University of Missouri System increased 16%, and graduate certificates increased 85%.
- Comparing FY 2007 degrees to the 10-year averages, the most notable increases are: bachelors degrees awarded are up 19% at UM-Columbia and 17% at UM-Kansas City; masters degrees are up 24% at UM-Columbia and 13% at UM-St. Louis; and doctorates are up 22% at UM-St. Louis, 14% at UM-Kansas City, and 14% at UM-Rolla.
- First Professional degrees at UM-Kansas City increased 18% when comparing FY 2007 to the 10-year average.

Notes Regarding Use of the Report:

- The official annual reporting period is from July 1 to June 30 of the following calendar year. For example, FY07 includes summer and fall graduates from 2006 and the spring graduates of 2007.
- Please note the axis scale range when considering graphs. It may change from campus to campus.
- Previous year's tables may differ because tables in the report have been changed from the use of running averages to 3, 5, and 10 year averages.
- This report includes a 10-year average as related to FY 2007.
- Source for this report is the printed Completions Report.

Technical Notes for Use with the Report:

Footnotes

- Footnotes are of the utmost importance in reading tables in the appendix.

Name Changes

- If a program name changes, the report history is changed to reflect the new name and is footnoted.
- If a degree name or description is changed, the report history is changed to the new description and is footnoted.
- If a department name changes, the report history is changed to the new description and NO footnotes are made.
- If a school or college changes, the report history is changed to the new description and NO footnotes are made.

Program Moves

- If a program moves to another department or school, the data are reported as is – that is, report history is not changed and the new data are reported in the new department. A new footnote is added, i.e., program is moving. Eventually – when there are no more degrees for the old department, the old department is hidden in the report.
- If a program moves to another school or college, the data are reported as is – that is, report history is not changed and the new data are reported in the new school or college. A footnote is added, i.e., program is moving. Eventually – when there are no more degrees for the old department, the old department is hidden in the report.

Figure 1: Rate of Change in Total Degrees Awarded by Campus, since 1998
 - Continued

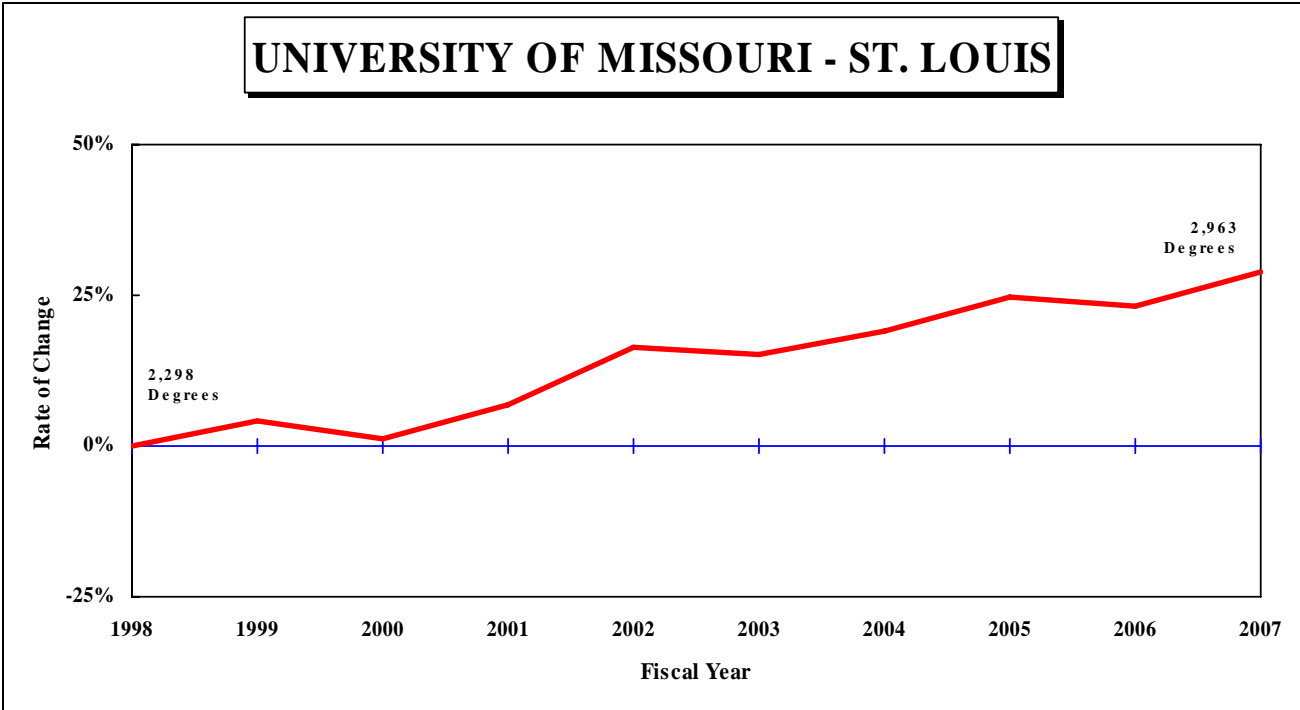
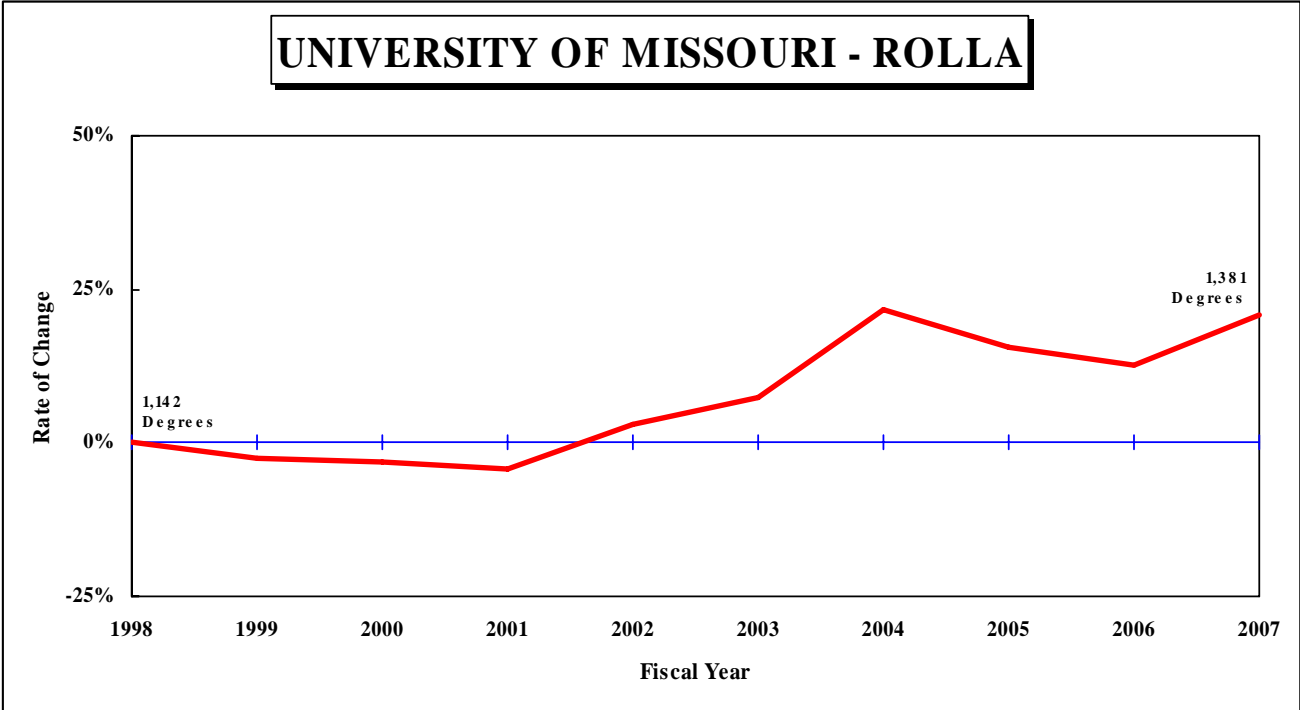


Figure 1: Rate of Change in Total Degrees Awarded by Campus, since 1998
- Continued

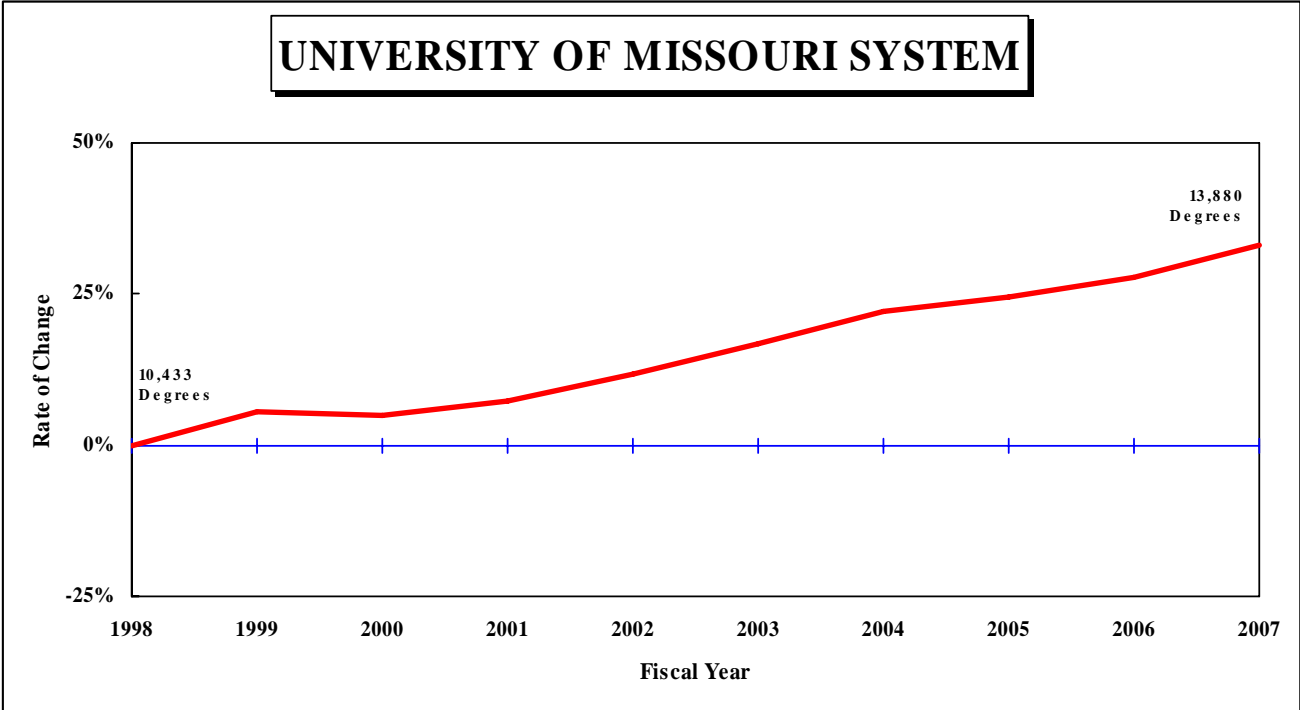


Figure 2: Rate of Change in Total Degrees Awarded by Campus, since 1998
 - Continued

UNIVERSITY OF MISSOURI - ROLLA

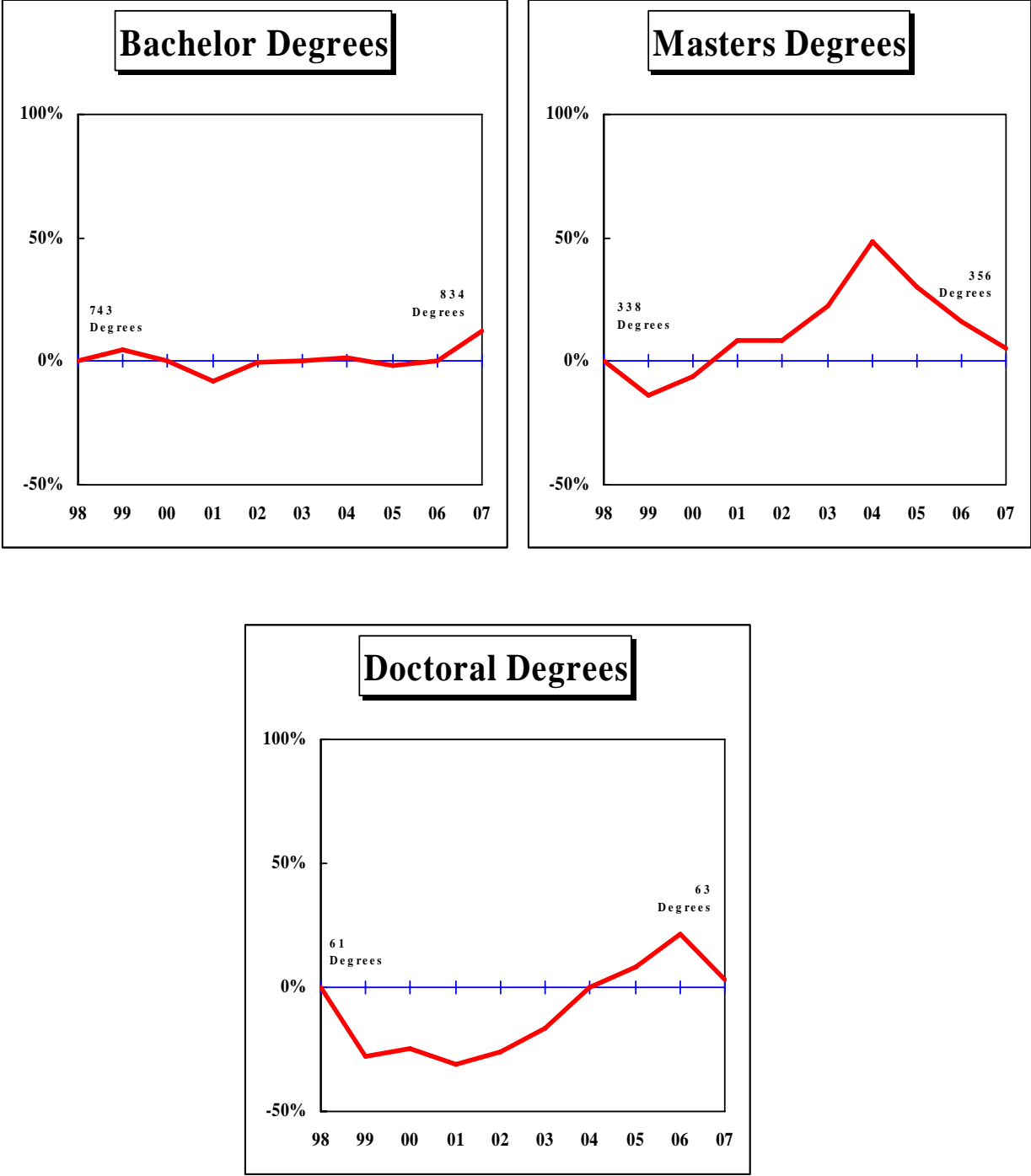


Figure 2: Rate of Change in Total Degrees Awarded by Campus, since 1998
 - Continued

UNIVERSITY OF MISSOURI SYSTEM

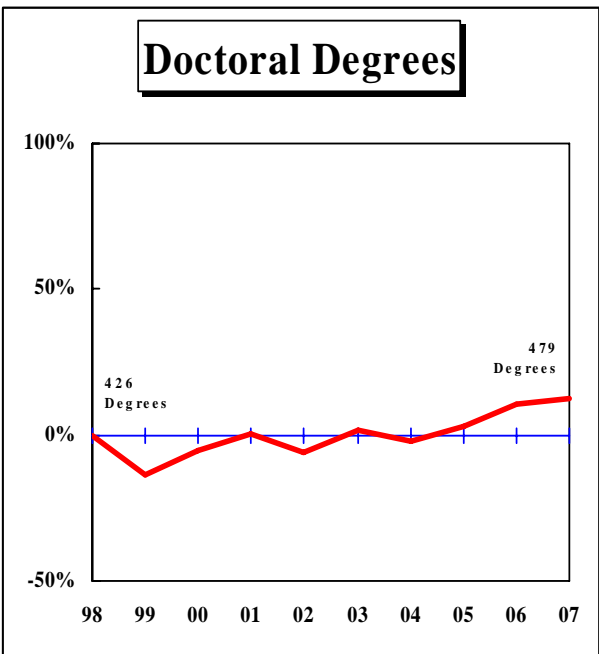
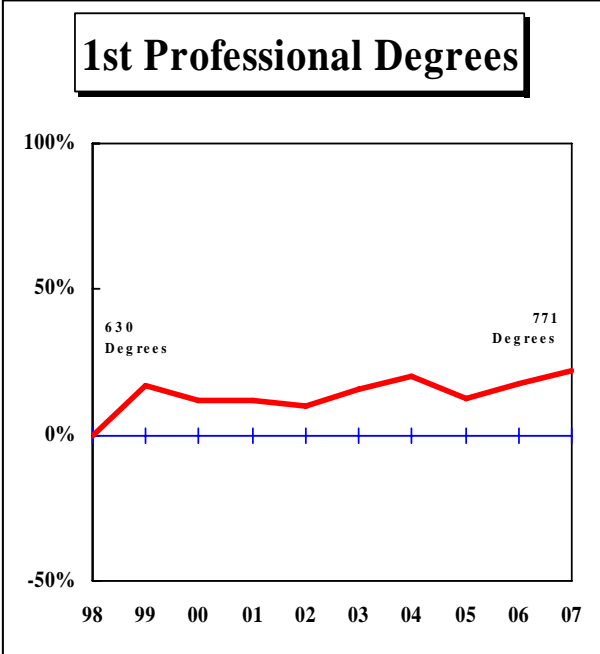
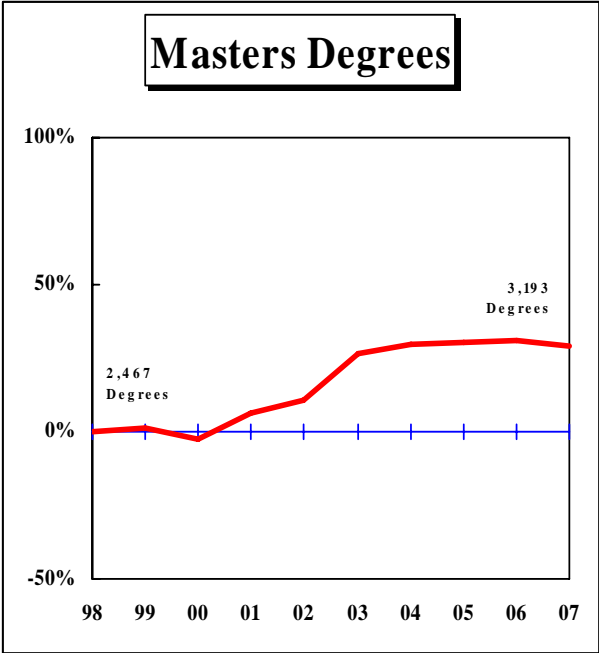
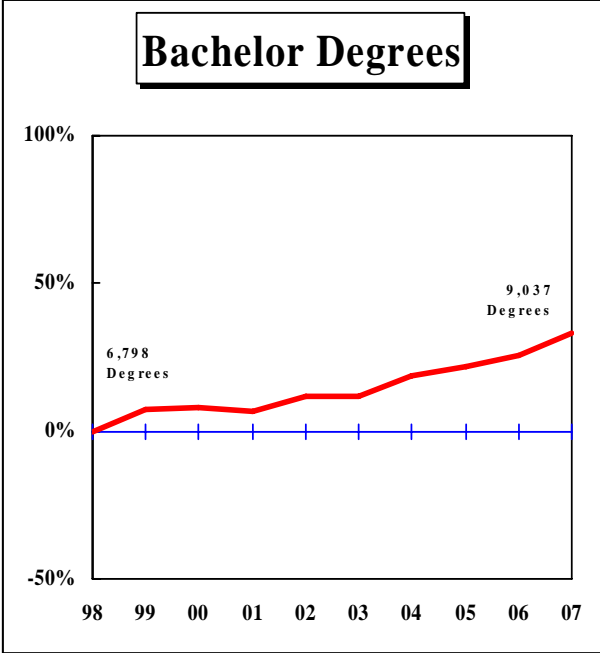


Table 1. Degrees Awarded at the University Of Missouri, July 1, 1997 Through June 30, 2007

DEGREE	FY	FY	FY	FY	FY	FY	FY	FY	FY	FY	<u>Average</u>			Change in FY07 relative to the 10-Year Avg.
	1998	1999	2000	2001	2002	2003	2004	2005	2006	2007	3-Year	5-Year	10-Year	
UNIVERSITY OF MISSOURI - COLUMBIA														
Bachelors	3,391	3,670	3,840	3,716	3,761	3,848	4,086	4,259	4,461	4,736	4,485.3	4,278.0	3,976.8	19%
Graduate Certificate					36	93	69	79	84	68	77.0	78.6	N/A	
First Professional	292	330	314	315	291	325	331	288	292	289	289.7	305.0	306.7	-6%
Masters	848	893	905	1,004	991	1,209	1,222	1,195	1,314	1,350	1,286.3	1,258.0	1,093.1	24%
Education Specialist	24	32	12	36	33	41	23	33	21	36	30.0	30.8	29.1	24%
Doctorate	277	230	256	278	252	274	251	274	277	293	281.3	273.8	266.2	10%
Total, All Degrees	4,832	5,155	5,327	5,349	5,364	5,790	5,982	6,128	6,449	6,772	6,449.7	6,224.2	5,714.8	18%
UNIVERSITY OF MISSOURI - KANSAS CITY														
Bachelors	1,001	1,138	1,045	1,081	1,221	1,135	1,316	1,393	1,425	1,428	1,415.3	1,339.4	1,218.3	17%
Graduate Certificate	21	23	18	19	8	22	9	19	23	19	20.3	18.4	18.1	5%
First Professional	300	364	348	344	359	364	390	377	415	438	410.0	396.8	369.9	18%
Masters	738	719	674	712	741	877	795	794	791	769	784.7	805.2	761.0	1%
Education Specialist	47	36	36	52	43	53	59	41	41	39	40.3	46.6	44.7	-13%
Doctorate	54	65	63	76	59	62	65	48	61	71	60.0	61.4	62.4	14%
Total, All Degrees	2,161	2,345	2,184	2,284	2,431	2,513	2,634	2,672	2,756	2,764	2,730.7	2,667.8	2,474.4	12%
UNIVERSITY OF MISSOURI - ROLLA														
Undergrad. Certificate										1	N/A	N/A	N/A	
Bachelors	743	779	743	685	742	743	756	731	744	834	769.7	761.6	750.0	11%
Graduate Certificate					22	20	70	83	75	127	95.0	75.0	N/A	
Masters	338	291	317	366	366	414	502	440	392	356	396.0	420.8	378.2	-6%
Doctorate	61	44	46	42	45	51	61	66	74	63	67.7	63.0	55.3	14%
Total, All Degrees	1,142	1,114	1,106	1,093	1,175	1,228	1,389	1,320	1,285	1,381	1,328.7	1,320.6	1,223.3	13%
UNIVERSITY OF MISSOURI - ST. LOUIS														
Bachelors	1,663	1,707	1,695	1,777	1,887	1,853	1,932	1,902	1,905	2,039	1,948.7	1,926.2	1,836.0	11%
Graduate Certificate	20	21	41	56	64	87	54	76	77	79	77.3	74.6	57.5	37%
First Professional	38	43	44	45	42	39	35	46	34	44	41.3	39.6	41.0	7%
Masters	543	590	507	545	637	622	675	786	730	718	744.7	706.2	635.3	13%
Education Specialist								3	29	31	21.0	N/A	N/A	
Doctorate	34	30	38	33	45	45	40	51	58	52	53.7	49.2	42.6	22%
Total, All Degrees	2,298	2,391	2,325	2,456	2,675	2,646	2,736	2,864	2,833	2,963	2,886.7	2,808.4	2,618.7	13%

Table 1. Degrees Awarded at the University Of Missouri, July 1, 1997 Through June 30, 2007 (continued)

DEGREE	FY	FY	FY	FY	FY	FY	FY	FY	FY	FY	<u>Average</u>			Change in FY07 relative to the 10-Year Avg.
	1998	1999	2000	2001	2002	2003	2004	2005	2006	2007	3-Year	5-Year	10-Year	
UNIVERSITY OF MISSOURI SYSTEM														
Undergrad. Certificate										1	N/A	N/A	N/A	
Bachelors	6,798	7,294	7,323	7,259	7,611	7,579	8,090	8,285	8,535	9,037	8,619.0	8,305.2	7,781.1	16%
Graduate Certificate	41	44	59	75	130	222	202	257	259	293	269.7	246.6	158.2	85%
First Professional	630	737	706	704	692	728	756	711	741	771	741.0	741.4	717.6	7%
Masters	2,467	2,493	2,403	2,627	2,735	3,122	3,194	3,215	3,227	3,193	3,211.7	3,190.2	2,867.6	11%
Education Specialist	71	68	48	88	76	94	82	77	91	106	91.3	90.0	80.1	32%
Doctorate	426	369	403	429	401	432	417	439	470	479	462.7	447.4	426.5	12%
Total, All Degrees	10,433	11,005	10,942	11,182	11,645	12,177	12,741	12,984	13,323	13,880	13,395.7	13,021.0	12,031.2	15%

IR&P/RS 8/07

Table 2.3: Degrees Awarded by Colleges at the University Of Missouri – Rolla

COLLEGE/DEGREE	FY 1998	FY 1999	FY 2000	FY 2001	FY 2002	FY 2003	FY 2004	FY 2005	FY 2006	FY 2007	3-Year	<u>Average</u> 5-Year	10-Year	Change in FY07 relative to the 10-Year Avg.
ARTS AND SCIENCES, COLLEGE OF														
Bachelors	149	178	164	172	153	149	160	162	155	174	163.7	160.0	161.6	8%
Grad. Certif.								1	0	2	1.0	0.6	N/A	0%
Masters	51	41	58	45	37	37	50	59	54	49	54.0	49.8	48.1	2%
Doctorate	20	12	18	10	16	9	17	11	20	18	16.3	15.0	15.1	19%
All	220	231	240	227	206	195	227	233	229	243	235.0	225.4	225.1	8%
ENGINEERING, SCHOOL OF														
Bachelors	466	467	435	407	455	432	464	445	439	501	461.7	456.2	451.1	11%
Grad. Certif.					22	20	70	82	69	113	88.0	70.8	N/A	0%
Masters	264	229	224	278	286	327	381	310	278	255	281.0	310.2	283.2	-10%
Doctorate	30	23	15	23	23	31	31	41	36	36	37.7	35.0	28.9	25%
All	760	719	674	708	786	810	946	878	822	905	868.3	872.2	800.8	13%
MANAGEMENT AND INFORMATION SYSTEMS, SCHOOL OF														
Bachelors					20	52	47	64	69	53	62.0	57.0	N/A	
Grad. Certif.								0	6	12	6.0	N/A	N/A	
Masters					0	3	6	15	20	18	17.7	12.4	N/A	
All					20	55	53	79	95	83	85.7	73.0	N/A	
MATERIALS, ENERGY, AND EARTH RESOURCES, SCHOOL OF														
U-Grad. Certif.										1	N/A	N/A	N/A	
Bachelors	128	134	144	106	114	110	85	60	81	106	82.3	88.4	106.8	-1%
Masters	23	21	35	43	43	47	65	56	40	34	43.3	48.4	40.7	-16%
Doctorate	11	9	13	9	6	11	13	14	18	9	13.7	13.0	11.3	-20%
All	162	164	192	158	163	168	163	130	139	150	139.7	150.0	158.9	-6%