

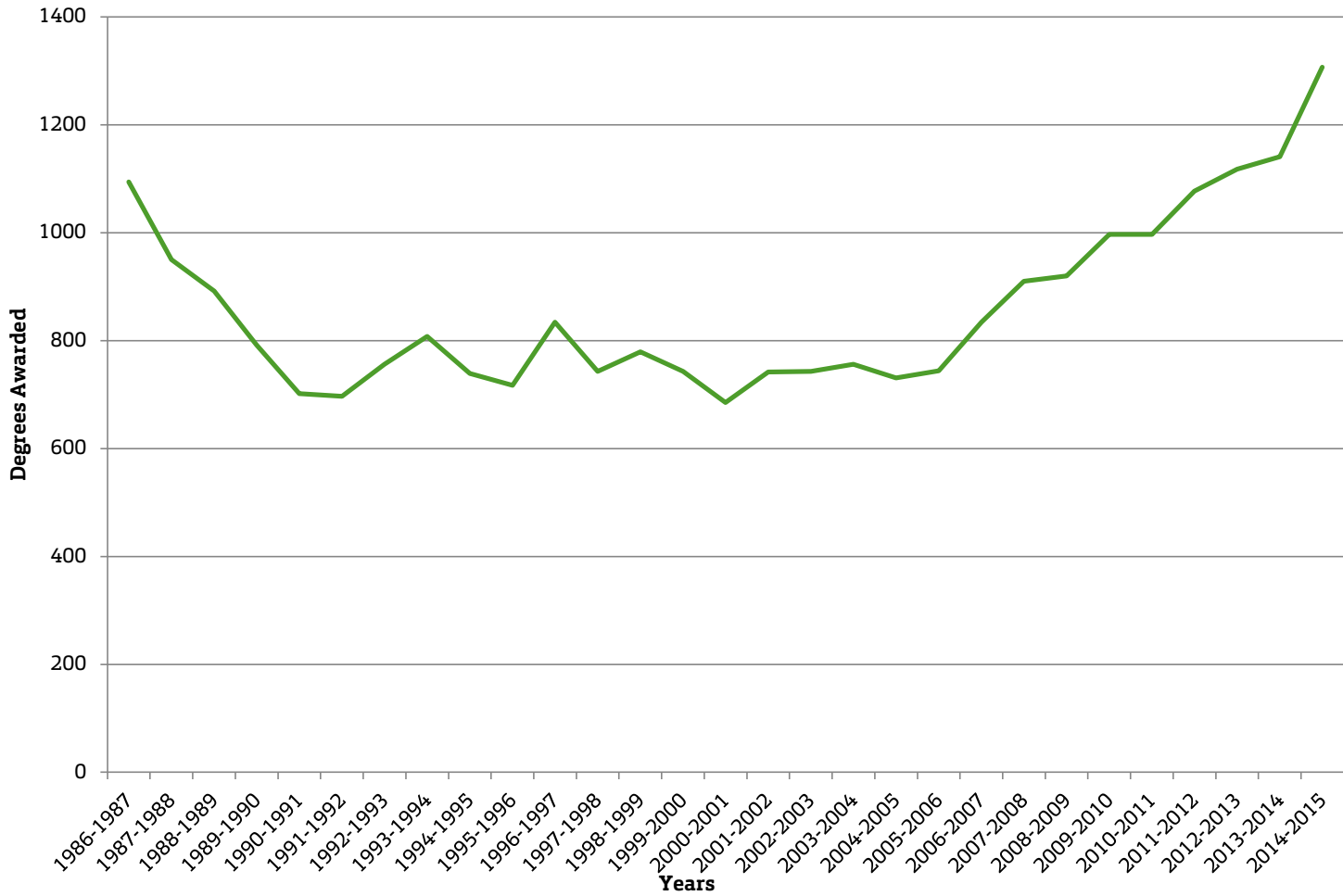
**Degrees Awarded by Level  
Academic Year 1986-87 to 2014-15**

Year	Undergraduate			Graduate		Total
	Bachelors	Certificate	Masters	Certificate	Doctorate	
1986-1987	1,094		291		44	1,429
1987-1988	950		299		37	1,286
1988-1989	892		271		39	1,202
1989-1990	792		295		52	1,139
1990-1991	702		271		63	1,036
1991-1992	697		298		59	1,054
1992-1993	756		298		58	1,112
1993-1994	808		305		66	1,179
1994-1995	739		317		60	1,116
1995-1996	717		304		65	1,086
1996-1997	834		332		59	1,225
1997-1998	743		338		61	1,142
1998-1999	779		291		44	1,114
1999-2000	743		317		46	1,106
2000-2001	685		366		42	1,093
2001-2002	742		366	22	45	1,175
2002-2003	743		414	20	51	1,228
2003-2004	756		502	70	61	1,389
2004-2005	731		440	83	66	1,320
2005-2006	744		392	75	74	1,285
2006-2007	834	1	356	127	63	1,381
2007-2008	910	3	430	164	63	1,570
2008-2009	920	2	426	250	50	1,648
2009-2010	997	1	411	278	51	1,738
2010-2011	997	4	517	282	65	1,865
2011-2012	1,077	2	567	319	70	2,035
2012-2013	1,118	0	579	435	95	2,227
2013-2014	1,141	3	551	401	70	2,166
2014-2015	1,307	14	675	404	95	2,495

Source: OIRA Completion Files

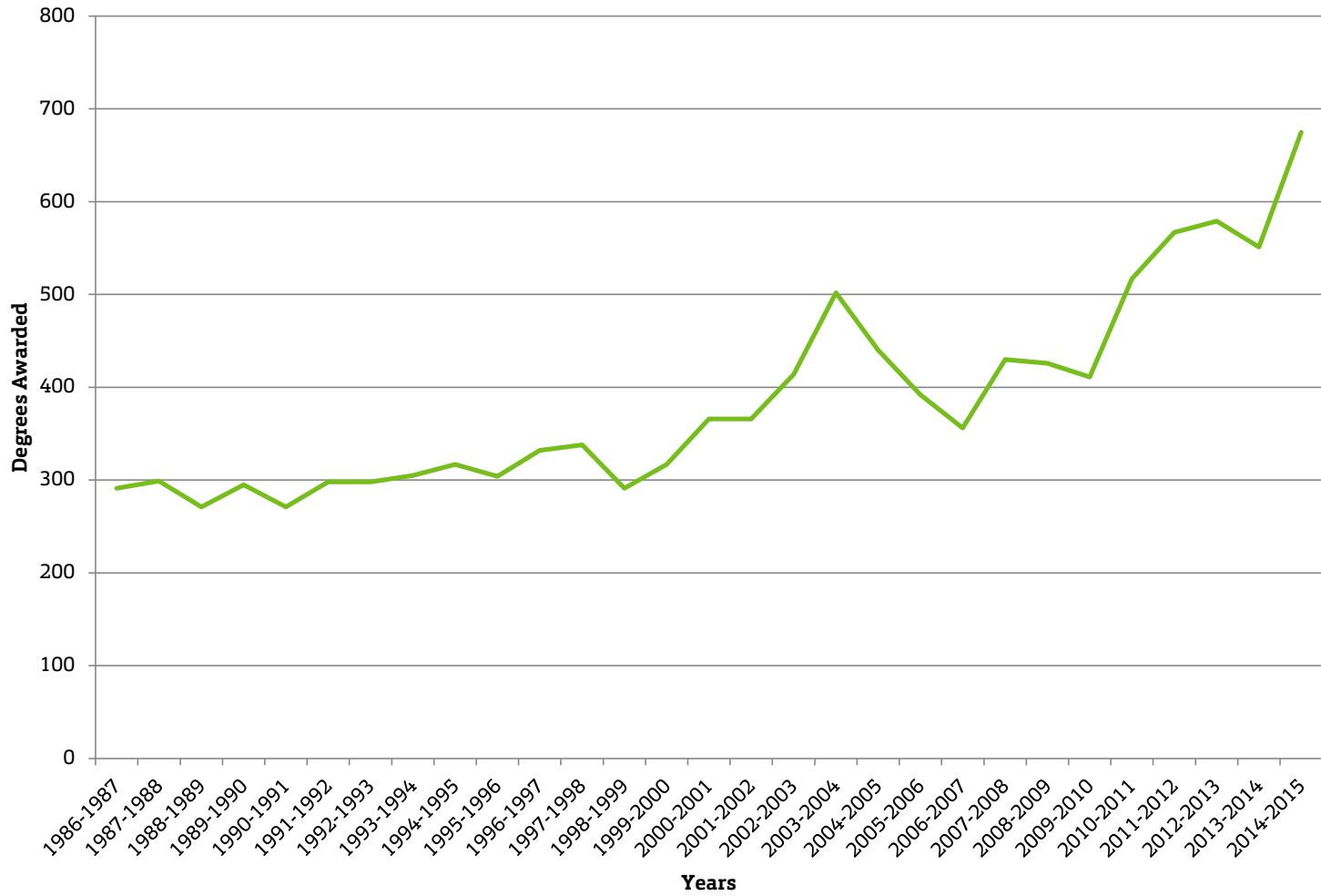
Degrees Awarded by Level  
Academic Year 1986-87 to 2014-15

**Bachelors**



Degrees Awarded by Level  
Academic Year 1986-87 to 2014-15

**Masters**



Degrees Awarded by Level  
Academic Year 1986-87 to 2014-15

Doctorate

